



Detailed Features

- Made of super bright LED with high quality.
- Acid-proof, alkali-proof and UV resistant.
- The lamp is filled with epoxy inside, which make it 100% waterproof.
- Low power consumption, high stability.
- Supports 16 different kinds of color changing programs.
- Long working life up to 60,000 hours.
- Easy to install, suitable for swimming pools, fountains, etc.



RGB: 18W/30W

White: 21W/33W





RGB



White



Warm White

Stainless steel frame

A316 Stainless steel plate and bracket
Acid resistant, alkali resistant, capable of salt water use
23.6 cm diameter, slim and elegant



100% waterproof

The lamp is fully filled protected with resin
Unique technique of resin filling, with waterproof level IP68,
the lamp has much longer working life



Constant current driving

All LED have consistent color and brightness.
With protection of over electricity, electric surge and lightning strike
High stability and long working life

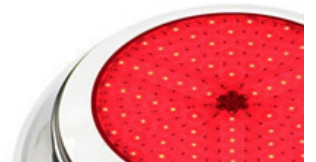
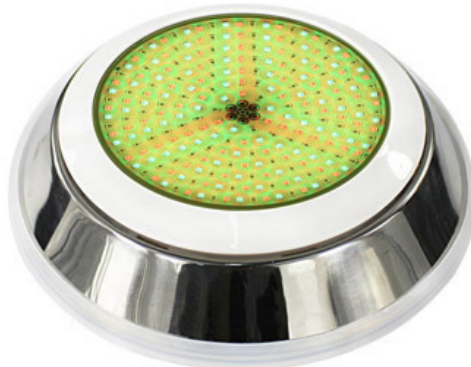
High Temperature Protection





16Color changing shows

There are totally 16 programs of color changing
You can switch the lamp to next show by powering off and powering on
Exciting color shows, florid and attractive



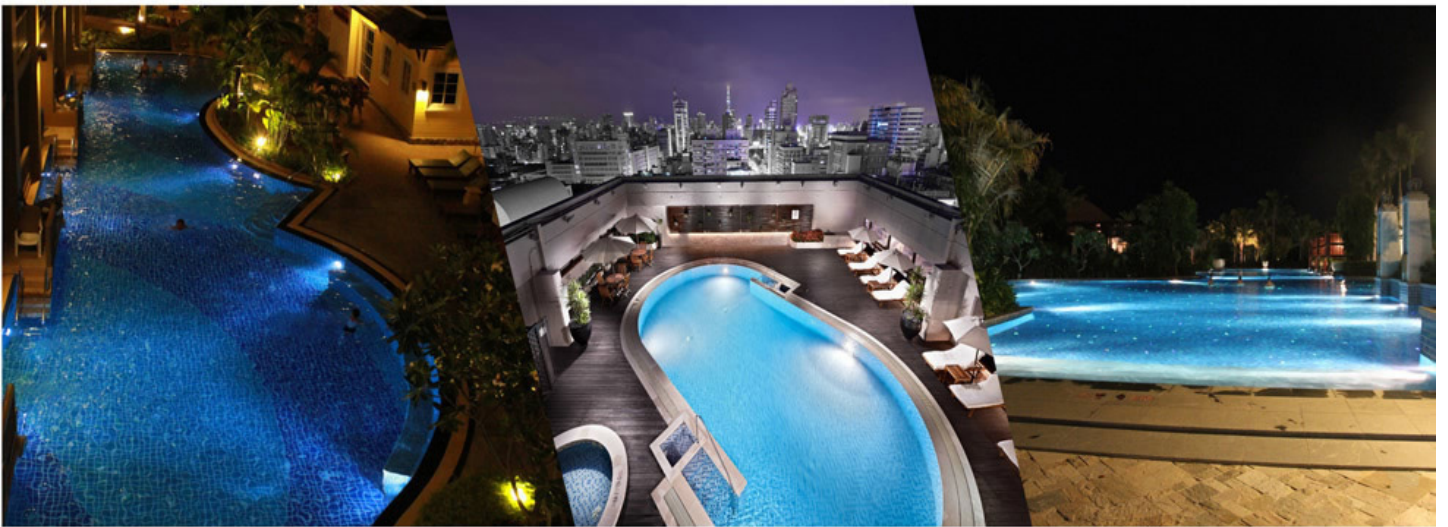


Widely used for

Swimming pool ✓

Spa ✓

Fountain ✓



Various ways of installation

Suitable for all types of swimming pools and spa

Wall Mounting

